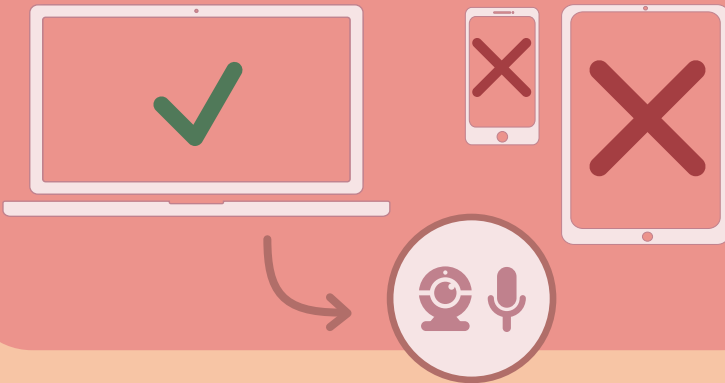


Hardware

Use a **computer or desktop*** with a working **camera and microphone**



* Remo is NOT supported on most phones and tablets

Logging On

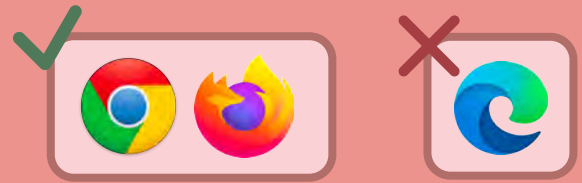
On event day, use the unique Remo event link to join the Luncheon

Creating an Account

! Once you click the event link you'll be brought the Remo landing page. Click **"Sign in to join event!"**

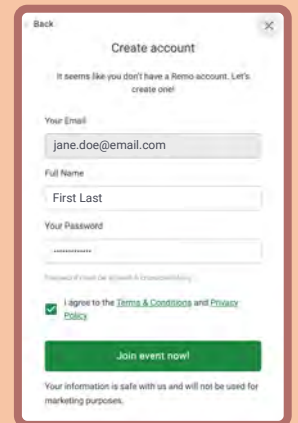
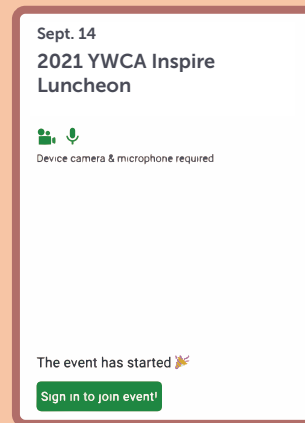
! Then, create a **Remo account** using your email address, name, and a unique password

Web Browsers



Remo works best on **Chrome** or **Firefox** browsers.

Microsoft Edge & Internet Explorer are NOT supported.



Floor Plan

Once you've successfully joined Remo, you'll see a 3D view of the **event floor plan**

Click and drag on the floor plan to move your view, **scroll** in and out to zoom

Control Bar

At the bottom of your screen is the **control bar**. Click the **Cam** and **Mic** buttons to get connected!



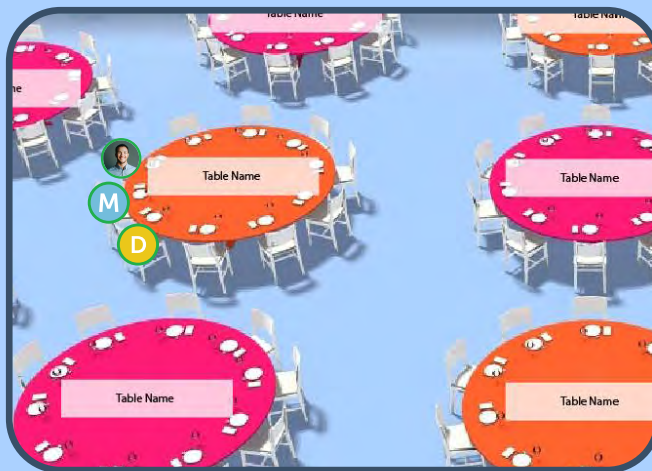
Cam and Mic not working?
Try changing your cam & mic inputs using the small black arrows next to the icons



Tables



The **floor plan** contains individual **tables**. These tables function as small video **chatrooms**. Only the other people at your **table** can see and hear you.



Double-click on any table on the floor plan to hop to another chatroom. Just make sure there is an **empty seat**!

Update Your Profile

Click the **circle icon** in the **top right corner** to update your profile & add a picture*

**Pictures must be less than 1MB in size*

Floor



The luncheon will have multiple floors and two "buildings" to accommodate all guests. On the far left side of your screen is the **elevator panel**. Click the elevator buttons to navigate between **floors**. Use the **box to the left of the stage** to navigate between buildings.

Go to building X

Need a Video Tutorial? Click here!

Need more support? Email us at ineventsupport@remo.co