

YWCA Seattle | King | Snohomish is dedicated to eliminating racism, empowering women, and promoting peace, justice, freedom, and dignity for all.

February 2019
Vol. 2 No. 9

BLACK HISTORY MONTH

Meet Patricia Hayden



Patricia Hayden serves as the Chief Program Officer for the YWCA of Seattle|King|Snohomish, whose mission is to Eliminate Racism and Empower Women. Her commitment to racial equity is the cornerstone of her 30 years of leadership at the agency. Patricia focuses on racial equity from a systemic perspective, understanding the impact systems have on the daily lives of communities served by the YWCA. She leads a division that serves over 15,000 people annually including focused populations of Black/African American women and their families, providing culturally appropriate services that address issues of homelessness and affordable housing; family unification; domestic violence prevention and intervention; education and economic opportunities. As a youth Patricia was an active participant in many of the surrounding youth organizations like CAYA and The Girls Club. She has always worked within Seattle's Central District and when hired by the YWCA she lived in the community, ½ block away from the East Cherry Branch.

In an interview with Patricia Hayden, she shared, "at the time that I arrived, YWCA did not have Eliminating Racism and Empowering Women as their mission. However, the National YWCA had one imperative, Eliminating Racism by Any Means Necessary. I was moved by this." Through mentors, including her grandmother,

who was the first African American Regional Director of CAMP Fire, Mrs. Hayden's leadership style was created. These mentors taught her to set a high bar, while also practicing passion and compassion and to center community voice in all her work.

Mrs. Hayden shared "I am humbled that I am able to do this work. I surround myself with conscientious and inspirational people, who want to make a difference in the world, especially for those who are negatively impacted by racism. I challenge myself daily personally and professionally to do more! I believe that true leaders do not create followers, they create more leaders." When it comes to connecting leadership to advocacy Mrs. Hayden believes that, "It is important to be aware of how political processes, especially in local politics, impacts the poorest living in our communities. These systems often dictate the quality of healthcare, housing and health, and safety offered to the poor and people of color." She continues her thoughts by stating, "knowing local politics allows us to hold politicians accountable and know what political groups one may want to become affiliated with. It is important to know who our politicians are and share our knowledge of how social service participants are impacted in their legislative district."

Patricia Hayden has lead the YWCA's East Cherry Branch and services throughout King County through strong and compassionate leadership, a deep connection with the community that she serves, and a belief connecting advocacy work to the voice of communities of color. Patricia shared, "Great ideas come from observation of the greater world around us; being open to one's own lived experiences; listening and seeing different perspectives as valid and possible; exposing oneself to a variety of opportunities; being ready to take action."

A MESSAGE FROM OUR COMMUNITY PARTNER!

Friends of Youth's Healthy Start program strengthens young families and promotes health and success for their young children. We offer four components:

- Parenting support and information
- Group activities (e.g. support groups and recreational activities)
- Developmental and health screenings

Referrals to other resources in the community/Eastside baby corner We serve anyone pregnant and/or parenting a child/children younger than 5 years old. This includes parents who are grandparents, foster parents, or other custodial parents. While enrolled in the program, you will receive parenting support and information in your own home. We use the Parents as Teachers program model, which empowers parents to be the best parents possible for their children. This model offers advice for each stage of development about how to create a positive loving family and give children the foundation for success in school and life. We currently have openings and would love to talk with you! Please contact us at heidi@friendsofyouth.org or call or text Heidi at

FAREWELL TAYNAYEE!

We congratulate Tahnayee Clendinen on her new position with Clover Park School District! Tahnayee, our Children & Youth Advocate, will transition out of her role at the beginning of this month. We are sad to see her go and thank her for all her work at FVI. We are in the process of looking for a new Children & Youth Advocate, and after-school programming will resume once that person is hired. If you are interested in being involved in the interview panel, please contact Eric at ebuley@ywcaworks.org or 206-794-9950.

Your Family Village Staff

Front Desk #: 425-270-6800

After-Hour Emergency #: 206-461-4888

fviinfo@ywcaworks.org

Monday—Friday 10:00am—4:00pm

Housing & Services

Trina..... Housing Services Manager
Lisa.....Assistant Manager
Victoria.....Program Coordinator
Michelle..... Program Assistant

Children & Youth Services

Eric..... Youth & Children Director
Tahnayee..... Children & Youth Services

Facilities

Dan..... Maintenance Supervisor
Tony.....Maintenance
Jesus.....Custodian



NOTICE FROM HOUSING:

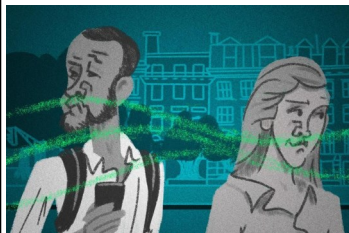
Smoking in your unit- cigarettes and/or marijuana

NO-SMOKING CAMPUS LEASE ADDENDUM

No-smoking policy – Due to the increased risk of fire, increased maintenance costs, and the health effects of secondhand smoke, the **YWCA Family Village Issaquah** has adopted the following No-Smoking Policy, which prohibits smoking in ALL interior and exterior spaces including residential units, common areas, community rooms, community bathrooms, lobbies, reception areas, hallways, laundry rooms, stairways, offices and elevators, entry ways, porches, balconies, patios or anywhere on the campus. This policy applies to all residents, guests, visitors, service personnel and employees.



**Regardless of Marijuana being legal in WA, it does not permit usage. The YWCA is federally funded housing, therefore the use or possession of marijuana on this property will continue to be prohibited.*



The hallways and playground are getting 2nd hand smoke. Please consider the health of the other residents

MARK YOUR CALENDARS FOR UPCOMING EVENTS!

COME JOIN YMCA STAFF
FOR DINNER ON FRIDAY,
FEBRUARY 22, 2019
FROM 6:30PM-8:00PM
IN THE VILLAGE
COMMONS TO LEARN
ABOUT YMCA CAMPING
ADVENTURES! PARENTS
MUST ATTEND



YWCA IS ON
A MISSION

2019 HOMELESSNESS & HOUSING ADVOCACY DAY



Join Us!

Thursday, Feb. 28, 2019
United Churches of Olympia
& Capitol Campus

At Housing and Homelessness Advocacy Day, your voice is heard on some of the most pressing issues of our time: housing affordability and an end to homelessness. Be a part of one of the largest annual lobby days at the Washington state capitol!

For more information contact Heidi Park at hpark@ywcaworks.org or call 206.319.2039

eliminating racism
empowering women
ywca
Seattle | King | Snohomish

We need our officials to understand that the homelessness crisis MATTERS and that the first step to ending homelessness is enough affordable housing!

The YWCA will be working together, with other sponsoring organizations of the Washington Low Income Housing Alliance, to bring program participants, YWCA staff, and community members together for Housing and Homelessness Advocacy Day on Thursday, February 28, 2019.

The YWCA will provide bus transportation for program participants we have limited space available.

Advocacy Day will include workshops, rallies, and pre-arranged meetings with our lawmakers. Our plan is to have program participants visit lawmakers together as "one community and one voice," supporting affordable housing for all.

Email fvinfo@ywcaworks.org for
transportation to Olympia